



City of Temple City

# PUBLIC WORKS POLICY

RESIDENTIAL DRIVEWAY APPROACHES

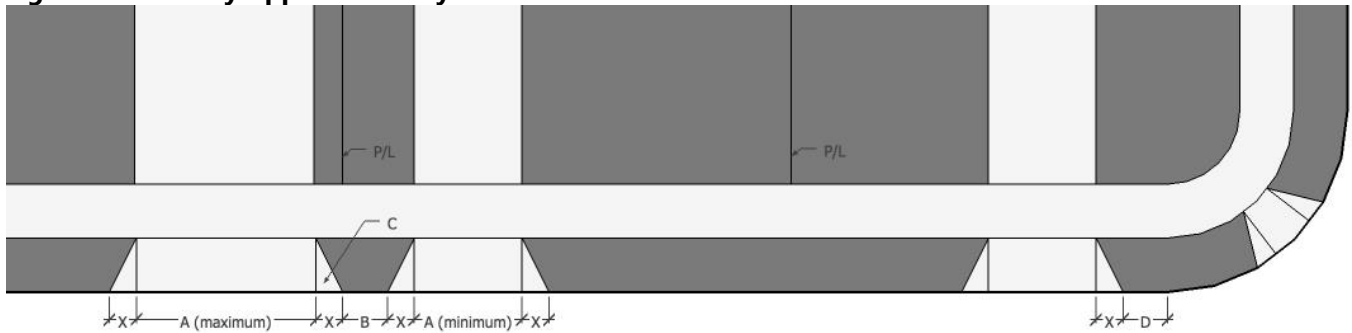
## DATE

April 4, 2022

## POLICY

This policy provides requirements for driveway approaches serving single family and multiple family residential properties. The purpose of the policy is to maximize safety for motorists, pedestrians, and other right-of-way users by minimizing the number of curb cuts and minimizing conflicts among vehicles, pedestrians, and other users.

**Figure 1: Driveway Approach Policy Illustration**



### Policies for new driveway approaches (letters reference labels in Figure 1):

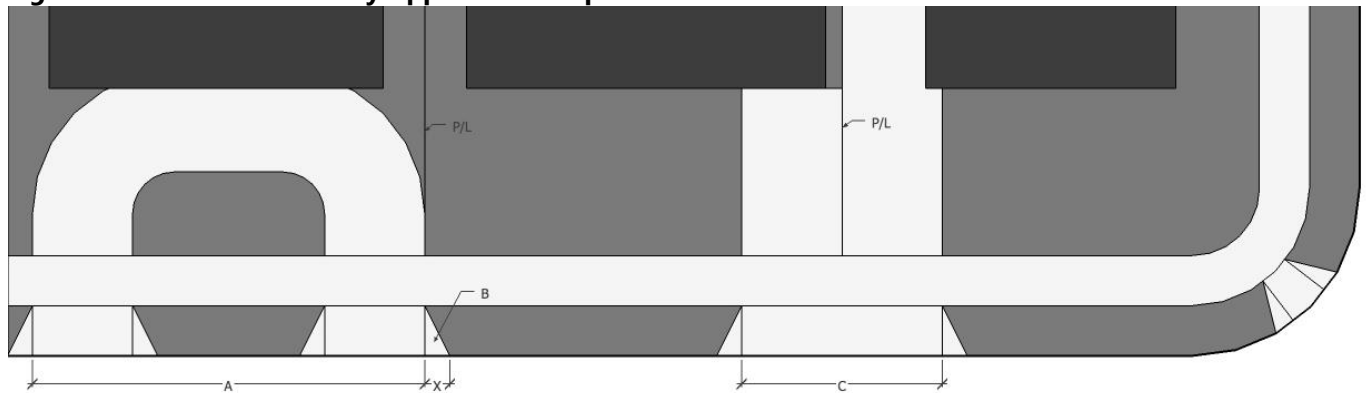
1. Driveway approach width not including **X** must be minimum 8 feet and maximum 20 feet (**A**). For single family houses, the maximum driveway width is limited to 10 feet when a one-car garage is located at or near the front setback or the garage is located to the rear of the lot and 20 feet when a two-car garage is located at or near the front setback. For additional zoning standards see 9-1E-2.
2. Driveways on abutting parcels must be located on opposite sides of the frontage when feasible; when not feasible, minimum curb distance between top of **X** on adjoining approaches is 5 feet (**B**)
3. Top of **X** must be at or inside property line (**P/L**) and may not extend in front of neighboring property (**C**)
4. Minimum curb distance between curb return and top of **X** is 5 feet (**D**)
5. Maximum one driveway approach per street frontage per parcel, except when a circular driveway is permitted pursuant to Temple City Municipal Code Section 9-1E-2.D.6
6. Each driveway must have a separate approach; shared approaches are not allowed
7. The driveway approach width (A) must match the width of the driveway, onsite

**Policies for replacing/moving existing driveway approaches:**

1. Shared approaches should be separated
2. Shared or adjoining approaches should be eliminated by moving one approach to the opposite side of the frontage if feasible
3. If 1 and 2 are not feasible, approaches should be moved to provide a minimum curb distance of 5 feet between top of **X**, and to move **X** inside the property line


**PROHIBITED APPROACH EXAMPLES (FOR ILLUSTRATIVE PURPOSES ONLY)**

**Figure 2: Prohibited Driveway Approach Examples**



**Prohibited driveway approaches (letters reference labels in Figure 2):**

1. More than one driveway approach on the same parcel (**A**)  
(prohibited unless a circular driveway is permitted pursuant to Temple City Municipal Code Section 9-1E-2.D.6)
2. **X** extends beyond the property line (**P/L**) and in front of neighboring property (**B**)
3. Two driveways share one approach (**C**)
4. A driveway approach where the width in the public right of way does not match the width on private property.

  
\_\_\_\_\_  
Scott Reimers, Community Development Director

04/04/2022  
\_\_\_\_\_  
Date Signed and Effective