



City of Temple City

# SUMMARY OF SIGN REGULATIONS

## A. GENERAL PROVISIONS

1. A property address in Arabic numerals at least five (5) inches high on the front of the business is required. This applies to the rear if public access is available. Additionally, each business must have a sign at least nine (9) inches high (in English letters) of their name or identifying the service they provide.
2. All signs are subject to the review and approval of the Community Development Department. Three (3) copies of detailed sign plans shall be submitted to the Community Development Department (see page 3 of this handout for
3. Window signs shall not exceed 25% of total ground floor window area. Window signs are not permitted on windows above the ground floor (2<sup>nd</sup> story or higher).
4. Permanent looking and visually interesting signs are encouraged. New "box signs" or "can signs" are not permitted. The existing ones are allowed to be continuously used and be replaced with the plexiglass/plastic face for the new business.
5. New roof signs are not permitted.

## B. GENERAL COMMERCIAL (C-2, C-3, M-1, M-2):

Permanent business signs are subject to the following limitations:

- Front: 3 square foot/ 1 lineal foot, up to 300 square feet maximum.
- Side: 2 square foot/ 1 lineal foot, up to 150 square foot maximum.
- Rear: 2 square foot/ 1 lineal foot, not taller than 20 feet for single business.

## C. DOWNTOWN SPECIFIC PLAN AREA SIGNAGE REQUIREMENTS:

City Center (CC) Commercial District.

- Front: 1 square foot/ 1 lineal foot of frontage
- Side: 1 square foot/ 1 lineal foot of frontage
- Rear: ½ square foot/ 1 lineal foot of frontage, a maximum of 150 square feet of sign area per property.

## **CITY OF TEMPLE CITY SUMMARY OF SIGN REGULATIONS**

Gateway (GC), West (WC), Temple City Boulevard (TC), and East (EC) Commercial Districts.

- Front: 2 square foot/ 1 lineal foot, not to exceed 300 square feet.
- Side: 2 square foot/ 1 lineal foot, not to exceed 150 square feet.
- Rear: 1 square foot/ 1 lineal foot of frontage

### **D. SITES WITH A SIGN PROGRAM**

For sites with a sign program, Contact the Community Development Department for the specific requirements.

- Temple City Marketplace
- Camellia Square
- 4808 Baldwin Avenue
- 5200-5220 Rosemead Boulevard
- 5546 Rosemead Boulevard
- 5919 Oak Avenue
- 6300-6324 Rosemead Boulevard
- 9441-9451 Las Tunas Drive
- 9906-9908 Las Tunas Drive

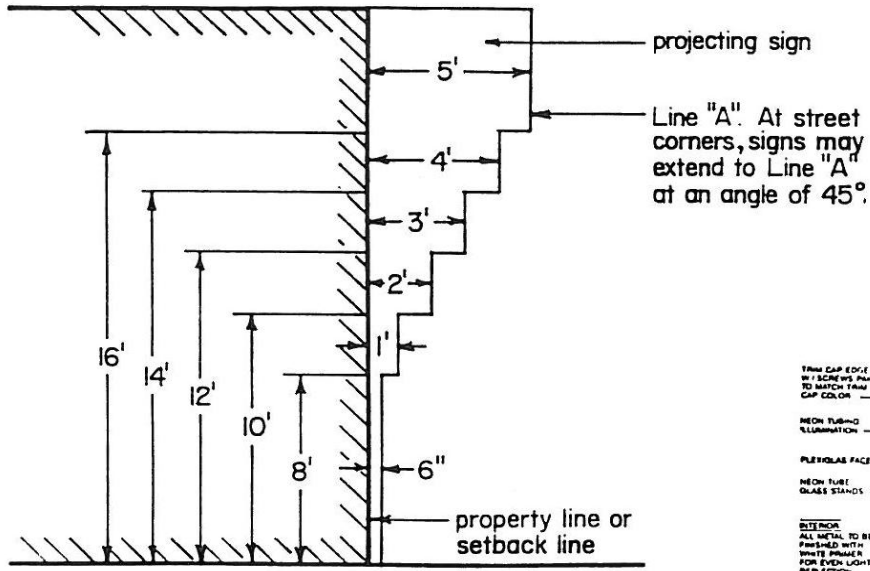
### **E. TEMPORARY SIGNS: BANNERS, PENNANTS, BALLONS, ETC.**

Businesses are allowed one banner, pennant or balloons for a maximum of thirty (30) days within any six (6) month period, and for a minimum of five (5) days. A temporary sign permit must be obtained from the Community Development Department prior to displaying a banner, pennant, balloons, or any other type of advertising.

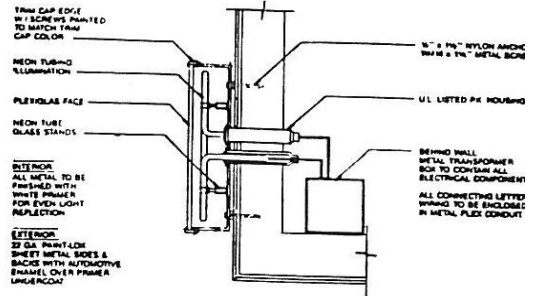
In addition, the following temporary signs are allowed for new businesses, businesses changing location, businesses under new management or a change of ownership. A temporary sign stating "Coming Soon" or "Under Construction" is permitted for a period of sixty (60) days. Also, a temporary sign stating "Grand Opening" or "Under New Management" is allowed for a period of thirty (30) days.

No flags are permitted, other than the State of California or United States flag, etc. "A" frame signs are considered temporary advertising and are permitted for a maximum of thirty (30) days on private property. Sidewalk and "A" frame signs are not permitted on public property.

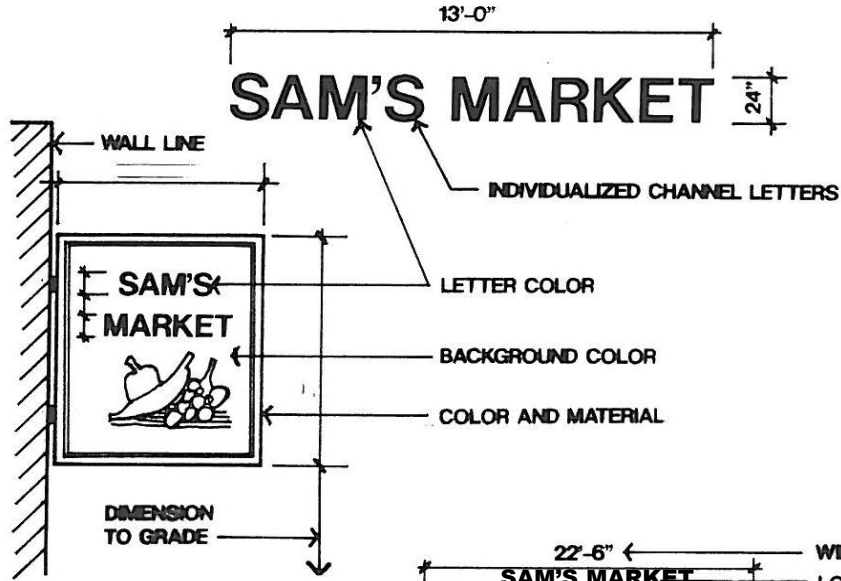
# CITY OF TEMPLE CITY SIGN DESIGN SUBMITTAL REQUIREMENTS



**Allowable clearance & projection over property line or setback line**

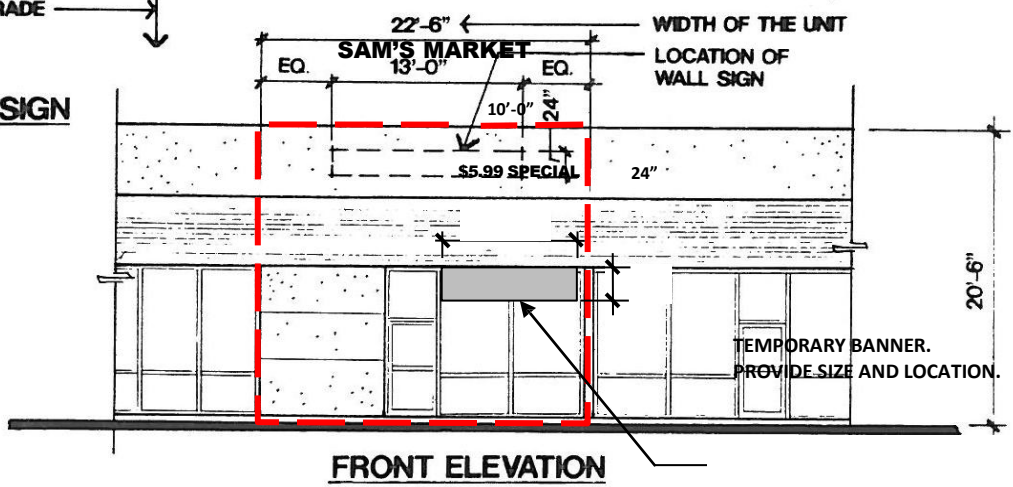


**CHANNEL LETTER DETAIL**



**SITE PLAN**

**PROJECTING SIGN**



**FRONT ELEVATION**

(SIDE AND REAR ELEVATIONS SHOULD BE SHOWN IF THEY ARE TO CONTAIN SIGNAGE)  
NOTE: SHOW ALL EXISTING SIGNAGE